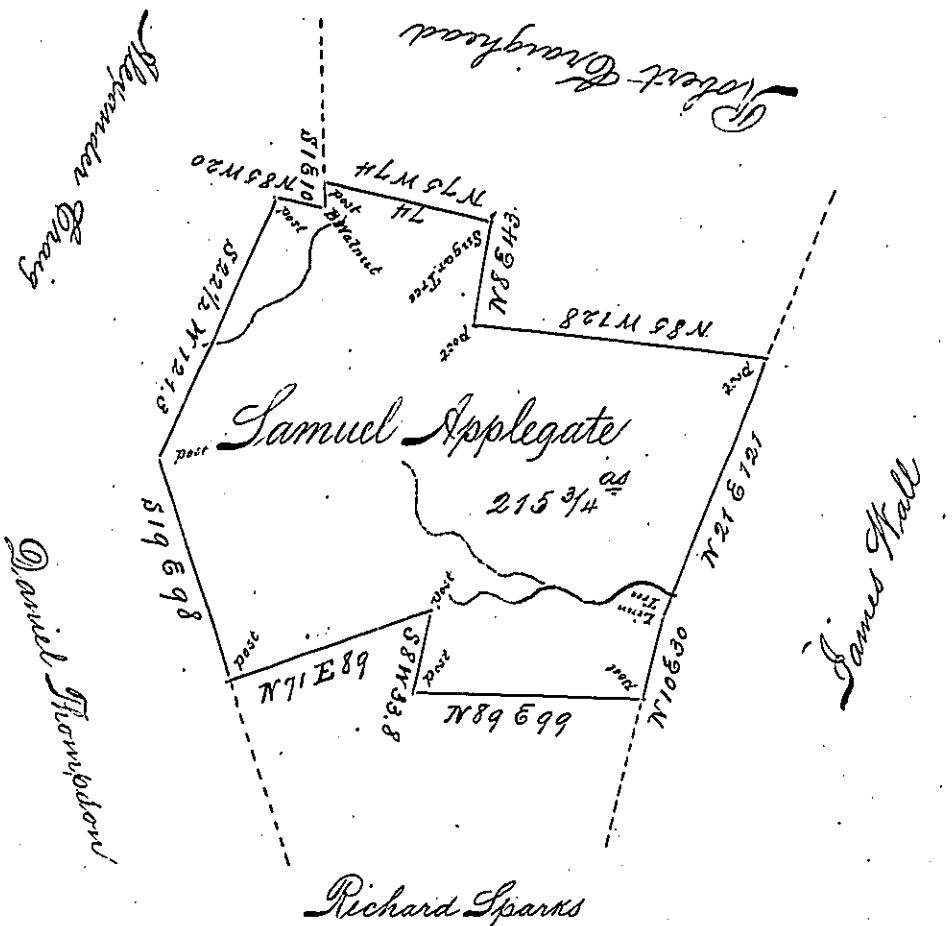


Elizabeth Township  
near Allegheny County



Situated on a Branch of Sparks Run in Post Ranch  
Township Westmoreland County and Surveyed on  
the 15<sup>th</sup> Day of May 1787. In Pursuance of a Warrant  
dated July the 10<sup>th</sup> 1786.

for Alexander McClean Deputy  
To John Lukens Esq<sup>r</sup> }  
Surveyor General  
now in Elizabeth Township Allegheny County

IN TESTIMONY that the above is a copy of the original remaining on file in the  
Department of Internal Affairs of Pennsylvania, made con-  
formably to an Act of Assembly approved the 16th day of  
February, 1833. I have hereunto set my Hand and caused  
the Seal of said Department to be affixed at Harrisburg, this

third day of September 1895.

James W. Latta  
Secretary of Internal Affairs.